

St Philip Westbrook
C OF E PRIMARY SCHOOL



“Together we aim high and with God’s love we can fly”



Head's Welcome

Thank you for taking an interest in our wonderful school. I hope that this prospectus gives you a wealth of information about the excellent educational experience we provide for our amazing children.

At St. Philip's, we aim to create a loving, caring community, enfolded by Christian values. Here children can develop their God-given potential in a secure, nurturing and happy environment that embraces excellence and enables children to live life in all its fullness. Our staff work tirelessly to ensure that our children flourish academically, spiritually and socially. Our most recent SIAMS inspection states, 'St. Philip's embraces excellent academic rigour by working with all pupils to achieve their God-given potential within a bold, exciting curriculum.' SIAMS Report 2019.

Our most recent OFSTED report recognised the outstanding provision our children enjoy. The report, published in April 2023 states, 'This school is a vibrant and aspirational place, where pupils, including those with special educational needs and/or disabilities, thrive. Pupils are happy. They get on well together and are considerate of each other's feelings. Pupils who have recently joined the school settle in quickly. Everybody is welcome.'

We pride ourselves in having the highest of expectations for our children and working collaboratively with parents to make sure all our children flourish at school.

I personally invite you to visit our school to learn about the exceptional educational experience we could offer your child by attending one of our Open Days, or visiting the school to meet staff and to tour our attractive school building and grounds.

Mr Paul Stanley

Headteacher



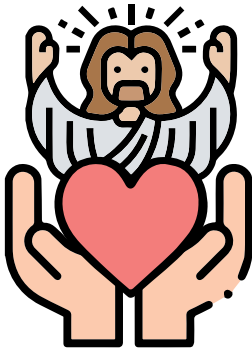
Our School Vision & Values

Our school vision is, '**Together we aim high and with God's love we can fly**' and this is fundamental to everything we do at St. Philip's.



Encourage one another
and build each other up.

1 THESSALONIANS 5:11



God is Love.

1 JOHN 4:16

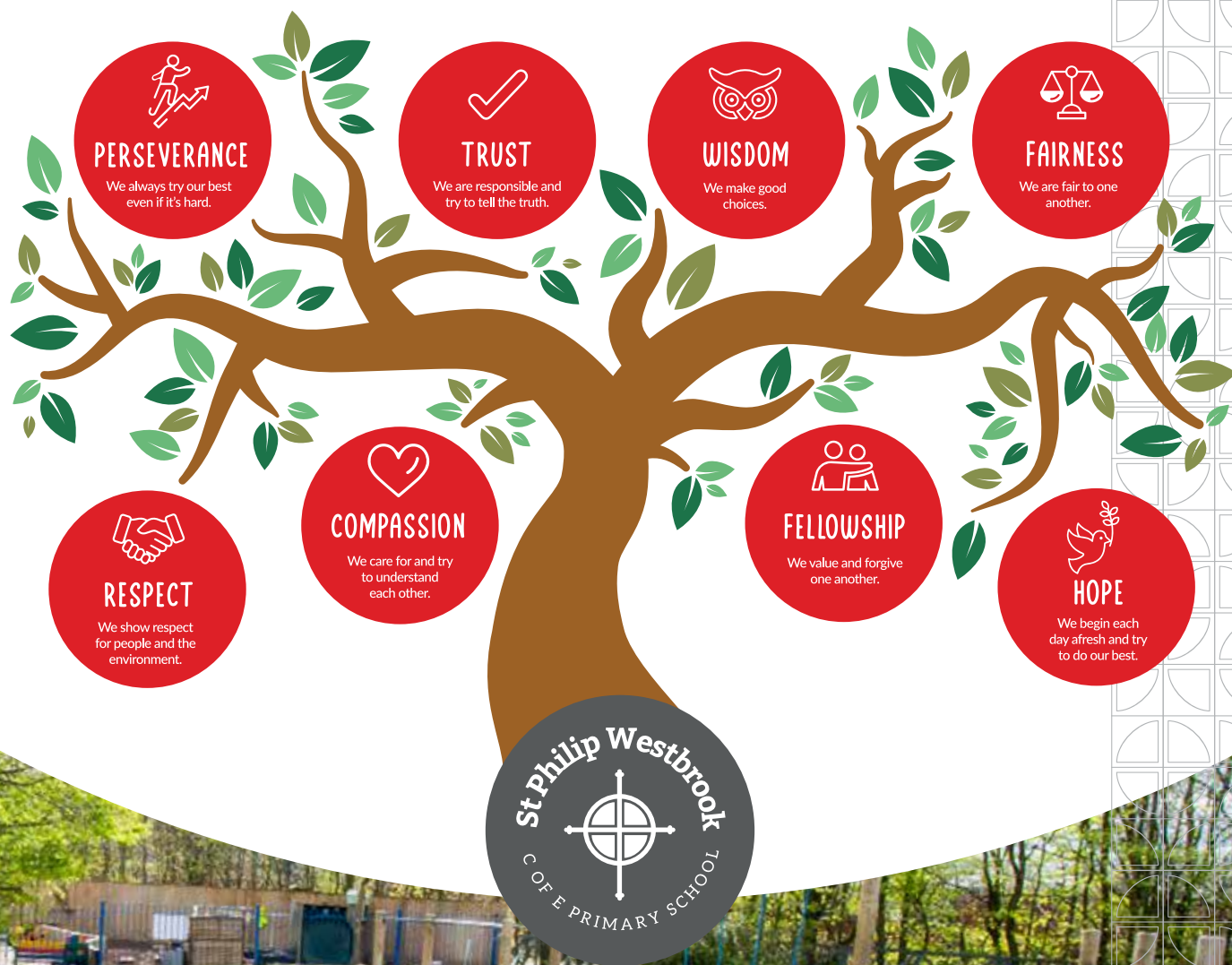


Those who hope in the
Lord will renew their
strength. They will soar
on wings like eagles.

ISAIAH 40:31

Our most recent Keeping on Track report from the Diocese of Liverpool states, 'The school's Christian vision and associated values inspire the community to provide a loving, nurturing, stimulating and celebratory environment in which all pupils are given the opportunity to flourish and aspire to reach their God-given potential. The school helps to prepare pupils, not just for a flourishing life within the school and the local community, but for life beyond the primary school years.'

All our staff work tirelessly to ensure that our children understand and develop a core set of values which guide them in their lives. It is our aim that our children achieve well academically and socially, not just in the primary years, but on their further educational journey through secondary school. The values we all aspire to are:



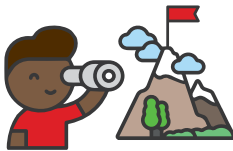
Our Curriculum

At St. Philip Westbrook, we provide a challenging and exciting curriculum which has been written to meet the needs of all our pupils. We call this the AIM HIGH curriculum.

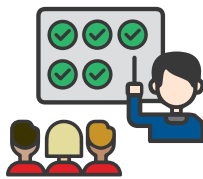
At St Philip Westbrook, the purpose of our **AIM HIGH** curriculum is to:



Aim for the highest of standards



Influence aspirations



Meet the needs of all pupils



Harness collaboration and promote oracy



Inspire and engage all learners



Gain knowledge, skills and vocabulary



Hold values at the heart of all we do



Together we foster a love of learning in a happy and safe environment to develop the mind, body and spirit. Progression of knowledge, skills and understanding is planned carefully both within each year group and across year groups in a way that maximises learning opportunities.

The progress and attainment of children is systematically tracked across all subjects in school to ensure that children achieve their potential. As a result, our children achieve highly across all subjects of the National Curriculum.

Our most recent OFSTED report states:

'Leaders work with commitment to ensure that all pupils benefit from the ambitious and stimulating curriculum they have designed. In all subjects, leaders have identified the important knowledge that they want pupils to learn and remember. Leaders have ordered this knowledge with meticulous care so that it builds on pupils' previous learning. Leaders have also focused their attention on connecting ideas across subjects and over time. This helps pupils to make links and to strengthen their understanding of important concepts.'



Reception

At our school, the Reception class is a vibrant and nurturing environment where your child will embark on an exciting educational journey. We take pride in offering high-quality resources and an impressive outdoor learning environment which allow children to learn and play in ways that spark curiosity and creativity.

Our Reception curriculum is thoughtfully designed, rooted in a deep understanding of how young children learn best. We believe that a strong foundation in these early years is key to your child's future success, and we are committed to providing a rich and engaging learning experience.

As an inclusive school, we celebrate the uniqueness of every child and are dedicated to meeting the diverse needs of all our pupils. Our goal is to create a space where every child feels valued, supported, and most importantly, happy.

Join us in laying the foundation for your child's bright future!



English & Reading

At St. Philip's, we are passionate about nurturing a love of reading and a deep appreciation for books in every child. Our expertly planned English curriculum is designed to maximise learning, ensuring that each student develops the strong literacy skills necessary for success across the curriculum and in future life.

High-quality texts are at the heart of our English teaching. We carefully select engaging and diverse books which inspire our pupils, enriching their understanding of the world and sparking their imaginations. Our approach emphasises the joy of reading, encouraging children to become lifelong readers.

Writing skills are equally prioritised. We nurture and develop our pupils' abilities, guiding them to become confident writers who can express themselves clearly and creatively. At St. Philip's, we aim for our children to mature as exceptional communicators, ready to thrive in all aspects of their education and beyond.

Our skilled teachers also work tirelessly to develop our pupils' spoken language. We recognise that the ability to communicate effectively is fundamental to success in life and have developed an oracy curriculum which ensures that our children talk confidently to any audience.

Join us at St. Philip's, where a love of reading and a mastery of English are the cornerstones of our pupils' success.



Mathematics

At St. Philip's, our approach to teaching mathematics is rooted in fostering a deep understanding of problem-solving and reasoning. We believe that a strong foundation in the fundamental basics of maths is essential, which is why our curriculum is carefully sequenced and progressive, ensuring that each new concept builds on previous learning.

We place a strong emphasis on the teaching of times tables, recognising them as the cornerstone of mathematical success. Our goal is to help children not only master these essential skills, but also to develop a genuine enjoyment of maths. We strive to make maths engaging and relevant by helping students understand how they will apply these skills in their own lives.

Our teaching is guided by a strong understanding of how children learn maths. To support this, we incorporate daily maths journaling, which allows pupils to reflect on their learning, develop their skills, and grow in confidence. With maths taught daily, we ensure consistent practice and reinforcement, helping each child to thrive.

At St. Philip's, we are committed to equipping our pupils with the mathematical skills they need to succeed, both in school and in the world beyond.



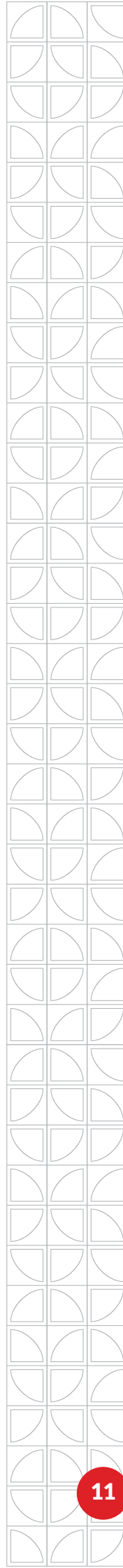
Creative Arts

At St. Philip's, we are dedicated to nurturing the creative talents of every child. Our school offers a wide range of opportunities in the creative arts, allowing pupils to explore and develop their unique skills and passions.

Children at St. Philip's can learn to play a variety of instruments, from traditional choices like brass, flute, and clarinet to modern instruments such as the electric guitar. Whether your child is discovering a love for classical music or is drawn to contemporary sounds, we provide the tools and guidance to help them thrive.

We believe in the power of performance as a key part of artistic growth. Our pupils have many opportunities to showcase their talents, performing for a variety of audiences throughout the year. These experiences not only build confidence but also instil a sense of pride and accomplishment.

At St. Philip's, we are committed to helping each child find their talent and giving them the chance to develop it to its fullest potential. Through our rich and diverse creative arts program, we aim to inspire a lifelong appreciation for the arts



Physical Education

At St. Philip's, we believe in the importance of physical education and the role it plays in helping children develop their sporting talents. Our commitment to high-quality PE is evident in the two expertly delivered lessons each week, where pupils receive instruction from well-trained staff who possess the knowledge and understanding needed to nurture core sport skills.

We take pride in offering numerous opportunities for our pupils to compete against other schools, fostering a spirit of teamwork, resilience, and sportsmanship. Our school boasts a number of dedicated sporting teams, giving pupils the chance to represent St. Philip's in a variety of sports.

We are fortunate to have a school minibus, which allows our teams to travel and compete across the region. This enables our pupils to experience the excitement and challenge of regional competitions, further enhancing their love for sports.

At St. Philip's, we are dedicated to helping each child discover and develop their sporting talents, ensuring that physical education is an enjoyable and rewarding part of their school experience.



Forest School

At St. Philip's, outdoor learning is an important part of our approach to learning.

Our on-site 'Forest School' provision is an important aspect of this and our children thoroughly enjoy the opportunity this brings them to play and learn outdoors with their classmates.

Forest School is more than just being outside playing in the mud (though we encourage a lot of that)! Forest School is an inspirational holistic approach to learning focusing on building emotional intelligence where children learn practical and social skills through self-initiated experiences and play.

During our programme, learners are encouraged to use natural resources to appreciate and understand the natural world.

The experiences we offer help learners to develop their sense of self, build a community and promote their physical and mental wellbeing.

Being outdoors in all weathers builds resilience and helps with mental health



Residentials and Visits

At St. Philip's, we believe that learning extends beyond the classroom. Our school offers a carefully planned programme of visits designed to enhance our exceptional curriculum and ignite our children's curiosity. These opportunities are thoughtfully crafted to excite our pupils and deepen their understanding of the world around them.

Our children visit a wide range of museums and places of interest, bringing their learning to life in meaningful and memorable ways. These experiences are integral to our approach, helping pupils connect classroom knowledge with the real-world.

In addition to day visits, we provide our children with the chance to participate in residential holidays which are directly linked to the curriculum. These residentials offer opportunities for outdoor and adventurous activities, building resilience, teamwork, and confidence. Our programme even includes a visit to London, giving pupils a chance to explore the cultural and historical richness of the capital.

At St. Philip's, we are committed to offering enriching outdoor learning experiences that inspire our pupils and broaden their horizons.



Personal Development

As a Church of England primary school, the personal development of our children has high priority at St. Philip's.

The personal development of our pupils is underpinned by our relentless focus upon the school's Christian values.

These Christian values are fundamental to our vision for education, and all staff are focussed upon ensuring that our children understand these values and apply them in their daily lives within school, outside school and beyond the primary school years.

Our children are immersed in a school ethos which promotes their personal development. Our school's Christian vision is that, **'Together we aim high and with God's love we can fly'**.

This vision is lived out by all members of our school community and impacts directly upon our children's personal development. Our aim is for all our children to flourish and to 'soar on wings like eagles'.

At St. Philip's, our **spiritual, moral, social and cultural** provision is excellent and this enables us to secure outstanding personal development.

Beyond our Christian vision and Christian values, outstanding personal development is secured for our pupils in a number of other ways such as:

- Pupil leadership opportunities
- Community involvement
- Performance opportunities
- Charity work
- Focusing upon British values
- Developing an understanding of inclusion, diversity and equality
- Developing knowledge of faiths and cultures



RESPECT



TRUST



WISDOM



HOPE



PERSEVERANCE



COMPASSION



FAIRNESS



FELLOWSHIP

Our Commitment to Inclusion

At St. Philip's, we are deeply committed to creating an inclusive learning environment where every child is valued and supported. We believe that all children, regardless of their abilities or background, have the right to a high-quality education and the opportunity to succeed.

For our pupils with Special Educational Needs and Disabilities (SEND), we provide tailored support that meets their individual needs. Our experienced staff work closely with families and external professionals to develop personalised learning plans, ensuring that each child can access the curriculum and reach their full potential.

We also take pride in supporting pupils with English as an additional language (EAL). Our inclusive approach ensures that these pupils receive the language support they need to thrive academically and socially. We celebrate the cultural diversity of our school community and work to ensure that every child feels included and respected.

At St. Philip's, inclusion is at the heart of everything we do. We are dedicated to meeting the needs of all our pupils, fostering a welcoming environment where every child can grow, learn, and achieve.



Explore Our Wide Range of Extra-Curricular Clubs

At St. Philip's, we believe in providing our pupils with a well-rounded education that extends beyond the classroom. We offer a vast range of extra-curricular clubs designed to inspire, engage, and develop the diverse talents and interests of our pupils.

Our clubs cater to a variety of interests, including sporting, musical, and curriculum-based activities. Whether your child is passionate about sports, eager to explore their musical abilities, or keen to deepen their understanding of academic subjects, there's a club for them at St. Philip's.

Our sporting clubs offer opportunities to participate in everything from team sports to individual activities, helping children stay active and develop their skills in a fun, supportive environment. For those with a love of music, our musical clubs provide the chance to learn new instruments, join a choir, or take part in ensemble performances.

We also offer curriculum-based clubs that enhance learning in subjects such as science and languages, allowing pupils to delve deeper into topics they enjoy and expand their knowledge.

At St. Philip's, our extra-curricular programme is designed to enrich our pupils' educational experience, helping them discover new passions, build confidence, and develop lifelong skills. We encourage every child to take advantage of the opportunities available and make the most of their time at school.



Wrap-Around Care

At St. Philip's, we understand the importance of flexible care options for busy families. Our wrap-around care provision is designed to support parents by offering a safe, nurturing environment for children before and after the school day.

Our care provision opens at 7:30 am, allowing children to start their day with a healthy breakfast and engage in fun activities before school begins. After school, our care extends until 6:00 pm, providing a relaxing space where children can unwind, complete homework, and participate in a variety of engaging activities.

With our dedicated staff and a welcoming atmosphere, St. Philip's wrap-around care ensures that your child is well cared for throughout the day.



How To Apply

Warrington Borough Council is responsible for co-ordinating all of our admissions. If you would like to apply for a place, then please see the relevant contact information below, as the process and deadlines differ dependant on if you are applying for a place in our Reception or in other Year Groups.

Application for Reception starters in September

If your child reaches five years of age between 1st September and 31st August, they will be admitted to full time school on the first day of the Autumn Term that begins in the September of that academic year. You can find all the details of how to apply on Warrington Borough Council website (warrington.gov.uk), read the information on the Primary School Admissions page and download their Primary Schools brochure. Details of deadlines and how to submit an application can be found on here:

warrington.gov.uk/primary-school-admissions

Applications for places in Year 1 through to Year 6 (In-year transfers)

If you are looking to transfer your child from one school to another mid-year or are relocating to the local area you must firstly apply through Warrington Borough Council (warrington.gov.uk). Read the information on their Moving Schools Page. Details of how to submit an application can be found on their website here:

warrington.gov.uk/moving-schools

We look forward to welcoming you to our school



Our Christian Values



Respect



Perseverance



Compassion



Trust



Wisdom



Fellowship



Fairness



Hope

St Philip Westbrook C of E Primary School
District Centre, Westbrook, Warrington, WA5 8UE



01925 445391



stphilips_primary@sch.warrington.gov.uk



stphilipwestbrook.co.uk



@StPhilipCEAP



Headteacher: Mr P Stanley

For enquiries please contact the school office.

