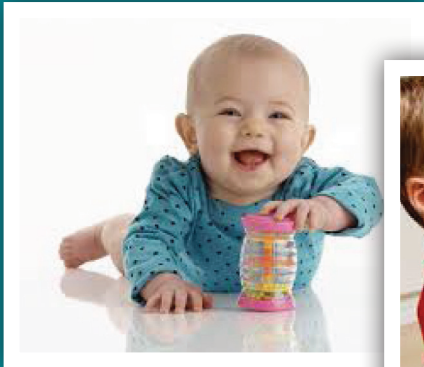




Early Help Division

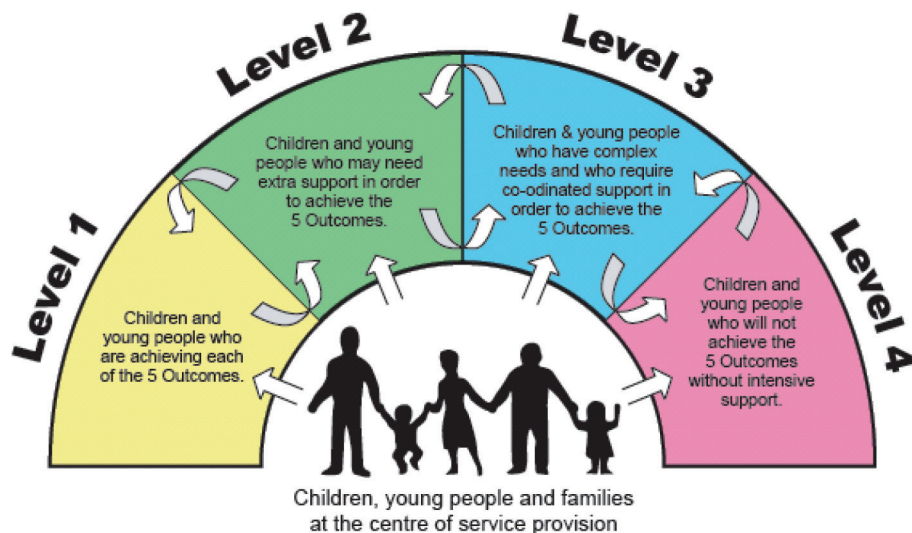


Offering information, advice and support to children, young people and their families as soon as possible in their lives.

Early Help is about identifying problems **early** so that support can be offered to **help** things get better.

Lots of people across Warrington offer early help services to families as part of the Family Support Model.

The Family Support Model sets out 4 levels of help depending on how much support is needed, from universal (Level 1) through to intensive support (Level 4).



Warrington Borough Council's Early Help Division works to these levels of need and offers a wide range of services to help families.

Level 1 – Services for everyone

Families Information Service (FIS)

The Families Information Service (FIS) provides a wide range of information for all families, carers and young people in Warrington including information on:

- Childcare and early years education
- Funding and financial information
- Clubs and activities in the local area
- Youth services
- Teenage services including teenage pregnancy and sexual health
- Children's Centres
- Family Support Services
- Local Offer.

The aim of the FIS is to provide a free, impartial advice and guidance service, covering all aspects of family life.

The FIS team also runs Warrington's Family Services Directory, a local directory of services for children, young people, families and practitioners who live, play or work in Warrington.

To find out more about FIS and the Family Services Directory:
Visit us online at www.warringtonchildren.org
Email: fis@warrington.gov.uk
Tel: 01925 443322

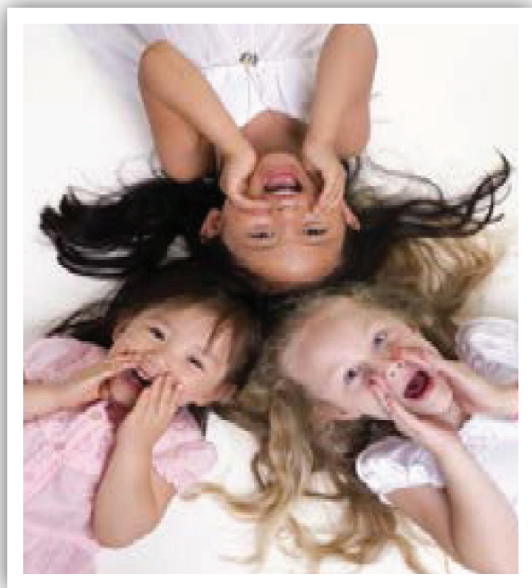


Free Early Years Entitlement (FEYE)

Children who are 3 and 4 years old are entitled to free early education places at local pre-schools, private nurseries, maintained school nurseries and child minders. Each child is entitled to receive up to 15 hours of free early years education per week with a local provider.

To find out which childcare providers are registered to offer this service, contact the Families Information Service.

Visit us online at www.warringtonchildren.org
Email us on feyeteam@warrington.gov.uk
Tel: 01925 443322



Children's Centres

Children's Centres are well placed across communities of Warrington to offer services that will improve outcomes for families. All families have access to universal services (level 1). Families identified as needing additional support can access targeted services (level 2).

- Healthcare – such as ante and post natal midwifery, health visitor clinics, breastfeeding support, developmental checks.
- School Readiness activities – such as Fun with Stories, Chatterbox, All Kinds of Play, Ready Steady Nursery.
- Family Learning – such as First Aid, English and Maths, Healthy Eating Cooking activities.
- Information and Advice – such as information about benefits, home safety equipment, volunteering and work ready programmes.
- Early help home visiting – such as targeted new birth visits, joint visits with professionals, 18 month visits to promote 2 year funded placement opportunities, young parents visits and to families with English as additional language.

Early Years Quality Team

The Early Years Quality Team provides a wide range of information and support to providers of childcare and early years education. The team can offer:

- Information and guidance on early years qualifications
- Support and guidance for providers wishing to register on the Early Year Register
- Targeted support for early years providers who are not yet deemed 'good' by Ofsted
- Targeted support for settings offering funded 2 year old places
- Comprehensive continuous professional development for the early years workforce across Warrington
- Targeted guidance and support to early years providers in implementing the early years SEND pathway
- Implementing Warrington Early Years Strategy by tracking children's development, working in partnership, and by promoting integrated 2 year old health checks.

Play Team

The Play Team offers a range of childcare services such as:

- Callands before and after school club
- Callands holiday club (depending on demand)
- Mobile crèche service
- Summer play schemes

To find out more information, contact the the Play Development Manager. Tel: 01925 442873
Email: ldattani@warrington.gov.uk

Level 2 & 3 – Early Help Services

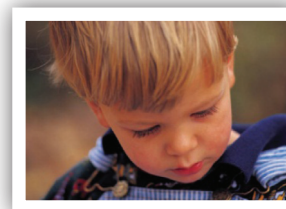
Free Childcare for 2 year olds

Free childcare for 2 year olds in Warrington can help young children to make new friends, learn through play and have lots of fun.

Access to the free places is limited and children must be eligible based on a range of factors such as:

- Parents/Carers are receiving specific benefits
- Child has a current statement of Special Educational Needs or an Education Health and Care Plan Level 2 and 3 – Early Help Services
- Child attracts Disability Living Allowance
- Child is under the care of the Local Authority or other care arrangements are in place (e.g. special guardianship)
- Child has been adopted or is going through the adoption process. The aim of the FIS is to provide a free, impartial advice and guidance service, covering all aspects of family life.

Children can also be nominated to receive a funded place. Professionals working with a 2 year old, whom they think would benefit from the place, can contact the FEYE team for more information.



To check if a 2 year old may be eligible for a free nursery place or to request an application form, please contact the FEYE team on: Email: feyeteam@warrington.gov.uk
Tel: 01925 443322

2 year old Outreach

To support children and families who are eligible for a free 2 year old funded nursery place, there is a dedicated Outreach Worker who can support families by:

- Helping families to complete the application form.
- Providing support to choose a suitable setting
- Building strong links between settings and home
- Monitoring the progress of funded children
- Signposting to other early help services.

To access support from the 2 year old Outreach Worker, contact:

Email: feyeteam@warrington.gov.uk

Tel: 01925 443322

Early Years SEN

Support plus is a set of initiatives that childcare providers can apply for if they are supporting a child with special educational needs and disabilities (SEND). Through support plus the early year's team can signpost practitioners onto relevant training and offer advice and funding. Support plus should be considered as part of the graduated approach to the early identification of SEND. Applications for support plus require parental consent and will be considered when settings can demonstrate that they have followed the early years SEN support pathway.

Warrington SEND, Information Advice and Support Service

This team supports parents of children with special educational needs and disabilities (SEND), helping parents and young people, up to the age of 25, to make informed decisions. The team offers early help to its service users by providing impartial advice and practical support about:

- Choosing an early years setting or school.
- Making transitions to schools or colleges.
- Statements of Special Educational Needs (SEN)
- Education Health and Care (EHC) assessments and plans.
- Annual Reviews.
- Disagreement resolution.
- Support with admission appeals, transport and exclusion appeals.
- And much more.

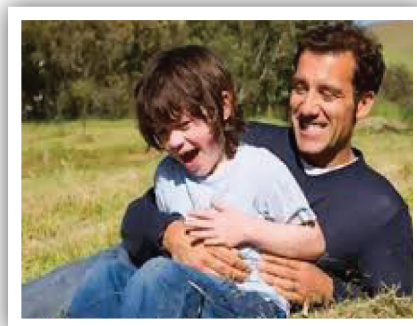
To find out more or to make a referral, contact Warrington SEND, IASS Tel: 01925 442978

Email: imacdonald@warrington.gov.uk

Website for further info: <http://www.warringtonsendiass.co.uk>

Family Outreach Team

*Working together
to support families
to build a safer and
stronger future*



The Family Outreach Team (FOT) is a dedicated team of workers who support families, providing early help to improve the life chances of children and young people.

The FOT (previously known as the Family Support Service) continues to offer high quality support to families, assessing their needs and co-ordinating interventions designed to help families.

A key aspect of the help provided to families includes:

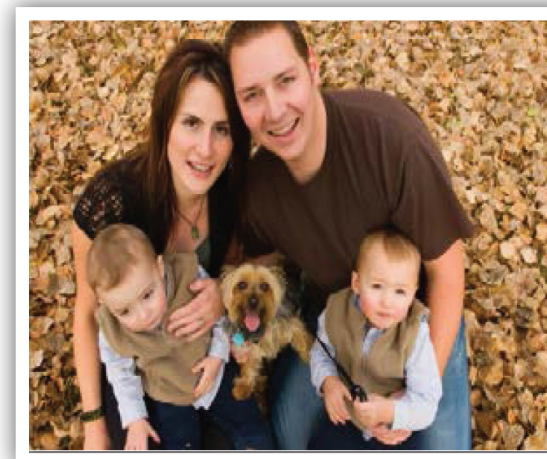
- Focusing on children under 5 years of age and families with children and young people 0-19 years old who are presenting with complex needs and who are requiring high levels of support and intervention.
- Remaining child and young person focused.
- Offering an early identification of needs through assessment of engagement.

- Co-ordinating services
- Identifying appropriate services
- Supporting parenting strategies
- Being a positive role model
- Being an advocate for children and young people; and
- Improving confidence and self-esteem of children, young people and parents/carers

Access to the service is via referral. To request a copy of the referral form or for further information, contact:

Tel: 01925 442980

Email: familysupportservice@warrington.gov.uk
or familysupportservice@warrington.gcsx.gov.uk



Brighter Futures Team

This team can help individuals looking to gain new skills and experience. They work with both young people and adults.

Supporting them to:

- Access a range of training opportunities.
- Find employment.
- Gain qualifications.
- Develop new skills through volunteering.
- Learn from each other through mentoring projects.



To find out more about getting help on the journey to a Brighter Future, contact the team on:

Tel: 01925 851029

Email: brighterfutures@warrington.gov.uk

Youth Service

Warrington Youth Service offers a range of activities to support the personal and social development of young people aged 13-19. All projects are based on listening to young people and working with them so that they get the best from the activity.



Activities can include sessions based on music, art, dance, sports and discussion and may be offered from any of the Youth Service venues:

- Orford Youth Base
- Mobile Youth Base at various places in the community.
- Community Settings

In addition to targeted activities for young people, the Youth Service also offers one-to-one support. Young people can ask for additional support or professionals may refer a young person to the service. One-to-one support will enable young people to overcome specific difficulties as they work with a dedicated youth worker to set targets and achieve goals. One-to-one work may focus on:

- Building self-esteem and confidence
- Tackling substance misuse
- Offering sexual health advice and support
- Overcoming social, emotional and behavioural difficulties.

Access to one-to-one support is via referral. To request a copy of the referral form or for further information, contact: Tel: 01925 851029

Early Help - Working with Partners

The Early Help Division works with a range of partners in delivering its support to children, young people and families. Specifically, the division includes two main sections which are responsible for partnership working and which support professionals to:

- Share information
- Develop skills in multi-agency working
- Negotiate and resolve difficulties
- Understand the difference early help services can make.

CAF and Development Team

This team is responsible for co-ordinating the work of all partners who deliver services as part of the Family Support Model. They deliver early help training, conduct background information checks, audit the quality of assessments and monitor engagement in the Family Support Model across all partners and the Early Help Division. For monitoring purposes and to see if early help is making a difference, the team is also responsible for storing information about children, young people and families who access early help services.

Complex Families

This team is part of a national programme called 'Troubled Families' that aims to improve how, as partners, we work together to support families as a whole. It will support and encourage partners to work differently. The Complex Families team evaluates these approaches, offers support to identify and resolve barriers, promotes best practice and shapes future service delivery. Programme outcomes will also be monitored by various central government departments to support and shape national agendas.

Find out more!

To find out more about the Early Help Division, please contact the teams on the details below.

For information, advice and guidance about services to families

Families Information Service

Visit us online at www.warringtonchildren.org

Email: fis@warrington.gov.uk

Tel: 01925 443322

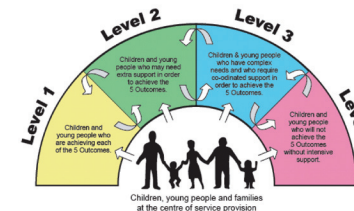


For information about CAF and training opportunities in Early Help

CAF and Development Team

Email: caf@warrington.gov.uk or caf.team@nhs.net

Tel: 01925 443136 / 443162



For information about the Complex Families programme

Complex Families Team

Email: complexfamilies@warrington.gcsx.gov.uk

Tel: 01925 443301 / 443302





If you would like this information provided in another language or format including large print, Braille, audio or British Sign Language please telephone 01925 443322

WARRINGTON
Borough Council

