

# The Prefix un-

A prefix is a letter or group of letters added to the beginning of a word to make a new word.

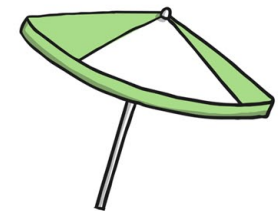
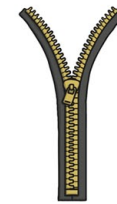
When **un-** is added to describing words (**adjectives**) it means 'not'.



**kind** - **un**kind (not kind)

**happy** - **un**happy (not happy)

When **un-** is added to action words (**verbs**) it means **the reverse** of that of that action.



**zip** - **un**zip (undo the zip)

**cover** - **un**cover (remove a cover)